

## Dockyard Port of Plymouth — Overview

### Kings Harbour Master (KHM)

Plymouth is a busy port with both military and commercial shipping movements. All maritime activities within the port are overseen by the King's Harbour Master (KHM). KHM is responsible for the navigation safety and traffic regulation of all vessels bound to and from the Dockyard Port of Plymouth including the commercial berths within the Cattewater, Millbay and Sutton Harbour.

### Control of Shipping

Shipping movements are controlled by the Port Control— callsign Plymouth VTS. They have full oversight of the race areas with visual, radar and CCTV coverage. Movements of all vessels over 20m in length are under the direction of Plymouth VTS. Details of planned military and commercial ferry movements are published daily on the KHM website - [Daily movements](#). Movements of commercial and fishing vessels to and from the Cattewater are co-ordinated by Plymouth VTS once timings are known. Plymouth VTS are on VHF Channel 14.

### Useful links

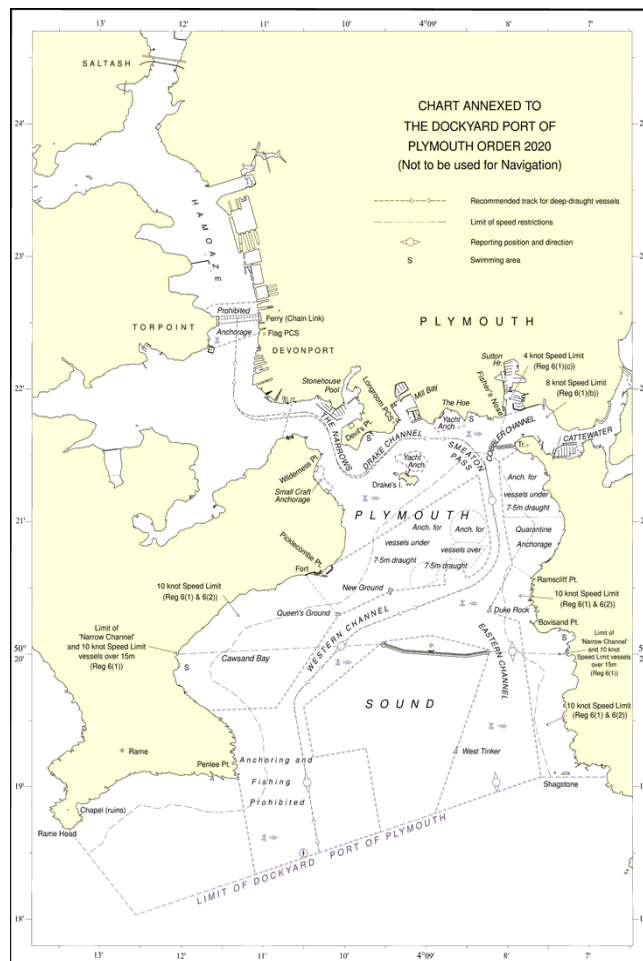
[KHM Website](#)

[Local Notices, Navigation Warnings and General Directions](#)

[Dockyard Port of Plymouth Port Order 2020](#)

[Plymouth Waterways Small Craft Guide](#)

[Cattewater Code of Conduct](#)



### Port Rules

- Speed limits (for vessels under 20m)-
  - ◆ Plymouth Sound within 400m of the shore—10 knots
  - ◆ Cattewater—8 knots
  - ◆ Sutton Channel—4 knots
- Vessels under 20m are to keep clear of military vessels and larger shipping.
- Keep at least 50m clear (100m for submarines) of all military vessels.
- Certain vessels may have a designated [Moving Exclusion Zone](#)
- Always obey the instructions of the Harbour officials, Marine police and Plymouth VTS.